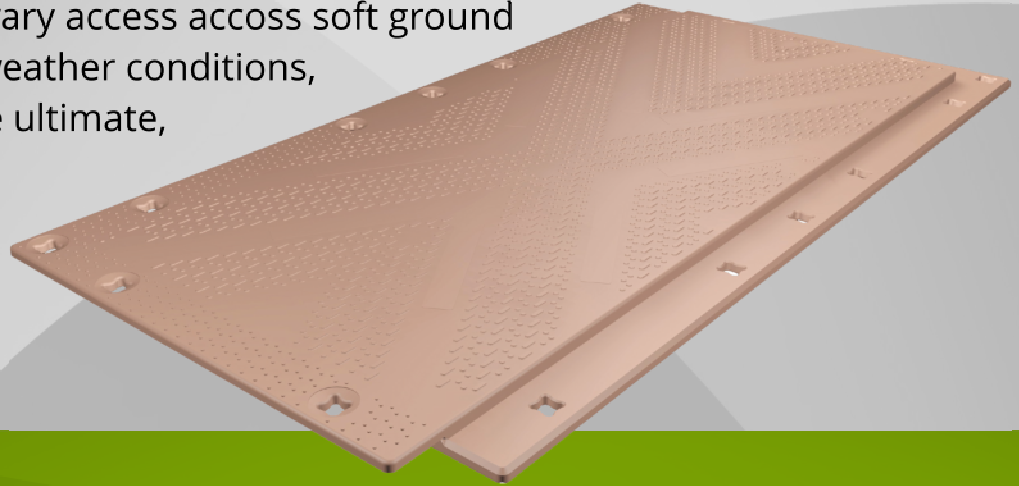


For safe, temporary access across soft ground and in extreme weather conditions, **Isotrack X** is the ultimate, extreme, heavy duty mat.



### KEY FEATURES

- Outstanding compressive strength more than 415 tonnes/m<sup>2</sup> reaching max force 730 tonnes/m<sup>2</sup>
- Each mat has two excellent traction surfaces
- Surface traction design for safe movement of vehicles
- Foam filled core prevents water ingress if mat is punctured (no cross contamination and no additional weight)

### KEY BENEFITS

- Compression moulded high performance thermoplastic material
- Robust, durable, high performance mat
- Overlap lip for interlocking mats to make roadways or working pads
- Patented Four3 connector pin system
- Cellular core construction provides buoyancy in water-logged areas
- Highly efficient weight dispersal across a wide range of ground conditions
- Reduce dust pollution on dry soils
- Protect sensitive habitats
- Protect ground from pedestrian traffic
- Easy and durable connection system
- Customer logo option
- Long life and recyclable at end of life





*Patented 'Four3' connector pin system*





### APPLICATIONS - MAIN SECTORS

- Oil and gas
- Utilities
- Construction
- Petrochemical
- Transmission
- Temporary helipads
- Wind farms
- Pipelines
- Quarries and mining
- Commercial timber and woodlands operations
- Any project requiring safe temporary access for heavy vehicles and equipment

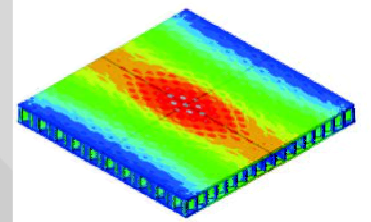
### SAFETY AND EFFICIENCY

Engineered for performance and strength, the interlocking mats distribute weight across a large surface area while remaining stable and strong through all operating conditions. The surface tread improves traction and safety for load-bearing vehicles, while the patented Four3 connection system reduces mat drift and slippage. The mats provide years of reusable performance with proper use and maintenance.

#### ANALYSIS AND TESTING OF ISOTRACK X MATS

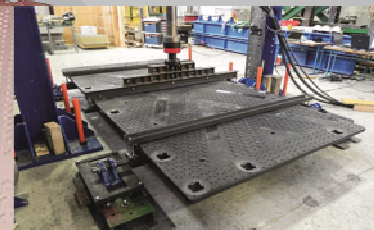
##### FEA Analyses

Faculty of Mechanical Engineering Maribor Slovenia



##### 3 POINT LOAD TESTS

Faculty of Civil and Geodetic Engineering/ University of Maribor



##### COMPRESSION TEST

Faculty of Civil and Geodetic Engineering/ University of Ljubljana



##### CYCLIC DEFLECTION TEST

Faculty of Civil and Geodetic Engineering/ University of Ljubljana:  
**100.000 cycles no break**



##### LOW TEMPERATURE TEST AT -40 DEGREES

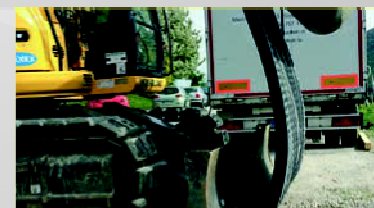
**NO BREAK**

IABG Munich-Germany



##### BENDING TESTS AT AMBIENT TEMPERATURE

**NO BREAK**



General information	
Overall Dimensions	4000 x 2000 x 94 mm
Useable Surface Area	1,8 x 3,8 m = 6.84 m <sup>2</sup>
Weight	360kg
Colour	Sand (standard), other colours optional
Logistic	Standard high cube 40 feet container 50 mats, Truck standard EU 60 mats
Handling	Designed for end users, 2-sided mat; for different type of vehicles
Recycling	100% recyclable
Safety	Nub structure prevents slips, trips, falls
Environmental	No liquid absorption, chemically inert, allows easy decontamination-cleaning
Compressive load capacity: 605 psi*	415 tonnes m <sup>2</sup>
Load bearing capacity	In excess of 200t*
Fire Rating	UL 94HB

\* Load capacity is dependent to ground conditions.



For more information, contact us today or visit our website:

[www.groundtrax.com](http://www.groundtrax.com)

# GROUNDTRAX

Ground Protection and Reinforcement

Telephone: 03456 800008 | Fax: 03456 800208

E-Mail: [info@groundtrax.com](mailto:info@groundtrax.com) | Website: [www.groundtrax.com](http://www.groundtrax.com)